

 **Valico**

GESTIONE DEL VAPORE



SCARICATORI DI CONDENSA E VALVOLE



SCARICATORE A GALLEGGIANTE FLT25

DESCRIPTION

The FLT25 is a series of float and thermostatic steam traps with integral air vent designed for modulating discharge of condensate, ensuring maximum system heat transfer.

Typical applications include unit heaters, heat exchangers, dryers, jacketed vessels and other applications where continuous discharge is essential.

MAIN FEATURES

Modulating discharge of condensate at steam temperature.

Unaffected by sudden or wide load and pressure variations.

No backing-up with condensate.

Excellent air discharge through its integrated air vent.

Flow direction can be easily changed by repositioning the body in relation to the mechanism and cover.

OPTIONS:

- Equalizing (vent) and drain connections.
- SLR – Steam lock release.
- HVV – Hand vent valve.
- BDV – Blowdown valve.
- AFZ – Anti-freeze device.
- FLL – Float lifting lever.
- VB21M – Vacuum breaker.

USE: Saturated and superheated steam.

AVAILABLE MODELS: FLT25-4,5 , 10 and 14 – SG iron.

SIZES: 1"; DN 25.

CONNECTIONS: Female threaded ISO 7 Rp or NPT.
Flanged EN 1092-1/-2 PN 16.
Flanged ASME B16.42 Class 150.

INSTALLATION: Inline horizontal or vertical installation.
Angled horizontal or vertical installation.
See IMI – Installation and maintenance instructions.

MAX. ΔP:

- FLT25-4,5 – 4,5 bar
- FLT25-10 – 10 bar
- FLT25-14 – 14 bar

CE MARKING – GROUP 2 (PED – European Directive)	
PN 16	Category
1" – DN 25	SEP



BODY LIMITING CONDITIONS		
FLANGED PN 16 *	FLANGED CLASS 150 **	RELAT. TEMP.
ALLOWABLE PRESSURE	ALLOWABLE PRESSURE	
16 bar	16 bar	100 °C
15,5 bar	14,8 bar	150 °C
14,7 bar	13,9 bar	200 °C
13,9 bar	12,1 bar	250 °C

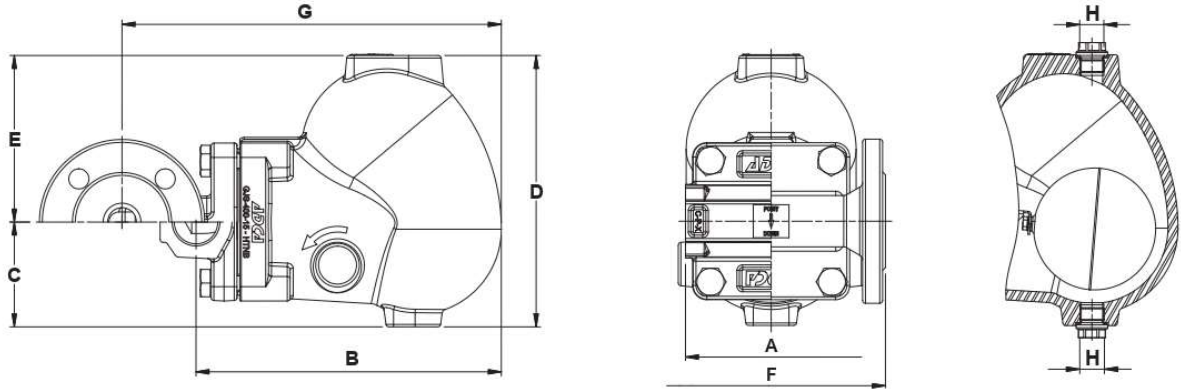
PMO – Maximum operating pressure: 14 bar.

TMO – Maximum operating temperature: 250 °C.

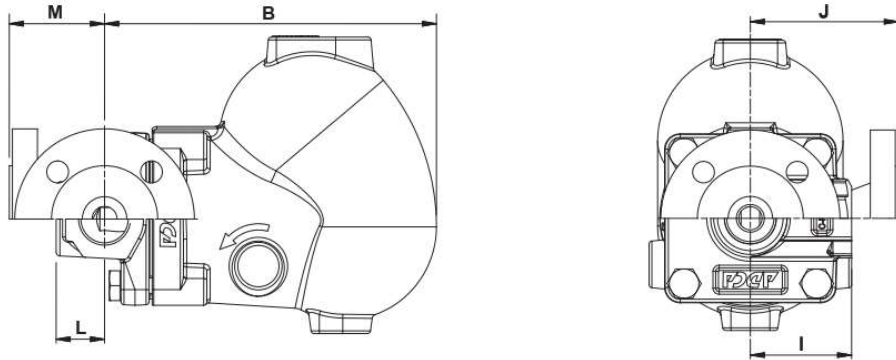
* Acc. to EN 1092-2:2018; ** Acc. to ASME B16.42.

Body limiting conditions PN 16 or below, depending on the type of connection adopted. Rating PN 16 for threaded versions.

FLOW RATE CAPACITY (kg/h)										
MODEL	SIZE	DIFFERENTIAL PRESSURE (bar)								
		0,5	1	1,5	2	4,5	7	10	12	14
FLT25-4,5	1" – DN 25	900	1250	1490	1630	2490	–	–	–	–
FLT25-10	1" – DN 25	445	610	705	850	1285	1670	1820	–	–
FLT25-14	1" – DN 25	335	445	515	600	885	1150	1350	1500	1610



Inline design



Angled design

DIMENSIONS (mm) – INLINE DESIGN														
SIZE	THREADED						WEIGHT (kg)	PN 16			CLASS 150			
	A	B	C	D	E	H*		F	G	WEIGHT (kg)	F	G	WEIGHT (kg)	
1" – DN 25	120	212	73	189	116	3/8"	8,9	160	264	12	160	264	11,9	

DIMENSIONS (mm) – ANGLED DESIGN														
SIZE	THREADED						WGT. (kg)	PN 16			CLASS 150			
	B	C	D	E	H*	I		L	J	M	WGT. (kg)	J	M	WGT. (kg)
1" – DN 25	212	73	189	116	3/8"	65	31	8,4	95	61	11	100	66	10,5

* As standard, in versions with EN flanges or female ISO 7 Rp threads, these connections are female threaded ISO 228. In versions with ASME flanges or female NPT threads, these connections are female threaded NPT.